

Weekly Newsletter

Monday 18th January 2021

Message from Mrs Wright

The children of Rivers continue to make me so proud! Well done to all of you for joining in with our remote learning. The teachers have worked hard to make sure that you have an exciting range of learning activities each day and so many of you have commented how great it is to see your teachers every school day. Thank you for all your feedback to date:

We are so grateful for the remote learning you are providing ... is enjoying the live sessions and enjoys being able to converse with his peers and you.

I am really happy that you are providing live lessons - it is certainly helping with maintaining a daily routines

... likes that she can still see you teaching - her face lights up when she is mentioned and receives feedback on the work she has completed.

Remote learning is well organised and structured. The daily timetable provided at the start of each day keeps us all in a good routine.

It's so much better having you 'at home' with us!

Thank you for a wonderful week of remote learning.

Please keep sending us your feedback.

Well done and thank you to all of the adults helping at home to support our children to be the best they can be.

Our children in school have been working equally hard - they too have been joining their teachers learning remotely.

COVID Safety - we have been informed by Public Health Walsall that the rate in Walsall is currently at the highest it has been. They have said that household to household transmission is still the biggest cause. Please help to protect our school community by following the Lockdown rules and not mixing with other households. Please inform us if your child tests positive so we can support you in any way.

If your child is currently attending school, please remember that if they develop any symptoms of COVID then they must not attend. Please phone the office if you are unsure.

Remember to follow us on twitter www.twitter.com/riversprimary where we share daily all of the brilliant remote learning.

Engagement Leader Board

Well done to all those children who have attended live lessons this week! Keep logging on for lots of learning and fun with your friends.

Class	Live Lesson Attendance
Severn	93%
Nile	91%
Clyde & Tiber	87%
Thames	86%
Penguin	85%
Fuji	79%
Avon & Amazon	74%
Ganges & Hvita	73%
Kuma	71%
Foyle & Trent	68%

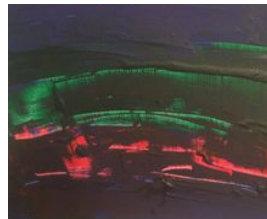
Year Group Update

Miss Millership and myself are so very proud of the children in year 2 who have clearly been working so hard for the first few weeks of their remote learning. Thank you parents for your continued support with this - we have loved seeing so many children join us for our live lessons.



During our live English lessons we have been using the book *'Trust me Jack, your beanstalk stinks!'* both of us have loved reading all of your wonderful writing that you have produced. You have been working really hard comparing the traditional tale *Jack and the Beanstalk* and *Trust me Jack, your beanstalk stinks!*

We have also been learning about our artist of the month Jackson Pollock and created our own live action art, either using paints or digitally on Purple Mash.



As a year group we are also not only topping live lesson attendance but we're also the most prolific spellers - as we top the Spelling Shed chart!

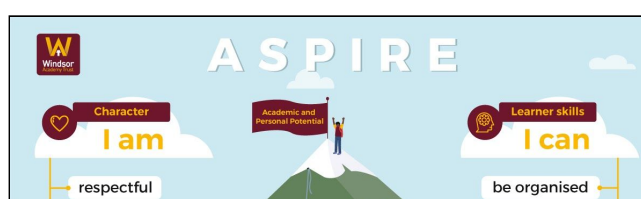
Next week, we have lots of exciting lessons planned, we think you'll particularly enjoy your science next week with lots of activities linked to our new topic habitats. Remember to keep reading and that Miss Millership and I are very proud of you all.

Miss Evans

Aspire Ambassadors of the Week

This week, children have been awarded for displaying the character virtue 'I am respectful.'

	Remote learning	In school
Avon	Benjamin P	Sophie C
Trent	Jake S	
Severn	Mia A	
Thames	Bashir U	Kye B
Clyde	Keith M	
Foyle	Shardanae P	
Hvita	Cherrie A	
Tiber	Millie T	Sophie M
Fuji	Yahia A	
Kuma	Alfie N	
Amazon	Junaid HE	



Hot Chocolate Friday

For displaying role model behaviour at all times, children in school will be enjoying a socially-distanced hot chocolate with a member of the senior leadership team, and those at home will be receiving their hot chocolate in the post. Please send Mrs Dawes photos of you enjoying yours if you are willing to

share.

	Remote learning	In school
Avon	Navjot B	Azari C Isla M
Trent	George W	
Severn	Guravdeep B	
Thames	George W	
Clyde	Tyler-James T	Taliah B Olly J
Foyle	Martyna C	
Hvita	Ava C	
Tiber	Elizabeth N	
Fuji	Isabel S	Teagan M
Kuma	Ellie-Mai S	
Amazon	Teagan M	

Rivers Family Challenge

This week we're challenging you to decorate your house for Rivers! Last lockdown people were putting rainbows in their windows, this lockdown to celebrate our amazing community we're challenging you to place a 'river' in your window. This can be interpreted however you want, perhaps turning your path into a chalk river, a painted picture in your window or streamers/ribbons/lights to decorate your house - who knows it's over to you!

During your daily exercise we're asking that you take a picture or even a selfie of any 'rivers' you spot and share with us via twitter - please remember to tag us @riversprimary

#MathsWeCan

Congratulations to the following children for improving their rockstar status. Please make sure that your child is logging onto Time Table Rock Stars.



Rock Hero (< 1 sec)	Rock Legend (< 2 secs)	Rock Star (< 3 secs)
Kai-Rhys (Tiber)	Richard (Fuji) Joshua (Tiber)	Isabel (Fuji) Ollie (Tiber)

	Martyna (Foyle) Maciej (Kuma)	Archie (Kuma) Ruben (Clyde) Talitha (Clyde) Jenson (Fuji) Ethan (Tiber) Ava (Hvita) Keegan (Foyle)
Headliner (< 4 secs)	Support Act (< 5 secs)	Breakthrough Artist (< 6 secs)
Billy (Fuji) Isabel (Tiber) Vlad (Hvita)	Jenson (Foyle)	Thomas (Hvita) Harvey (Tiber) Lily-Jo (Clyde)
Unsigned Act (< 7 secs)	Gigger (< 8 secs)	Wannabe (10 logins)
Lexi (Fuji) Joanna (Foyle)	Alfie (Foyle)	Eshall (Clyde) Ayvah (Foyle)

TIMES TABLE OF THE WEEK!

If you know one of these facts, what other facts can you work out?

$3 \times 8 = 24$

24						
3	3	3	3	3	3	3

$24 \div 3 = ?$

How many ways can you represent each fact?

$8 \times 3 = 24$

24		
8	8	8

$24 \div 8 = ?$

Weekly #mathswecan challenge: How many handles?

KS1: Count how many handles are in your house. Look for doors, cupboards, windows etc. How many did you find?

KS2: Count all of the door handles in your house. What fraction of the handles have locks? Plot a bar chart to show which room has the most handles.

Send your answers, photographs or work to Mrs Dawes.

Safeguarding

The last year has been anything but normal, and as we enter a new lockdown, it's likely that children are going to continue to spend more time online. From advice on gaming to helping manage your child's wellbeing online, the lockdown hub below has everything you need to help keep them safe including tips for online learning, gaming advice, a top tip of the week and information on popular lockdown apps.

<https://www.net-aware.org.uk/online-safety-lockdown/>

As ever, if you have a safety concern, please contact a member of the safeguarding team by calling the school office.