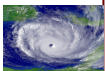


What? Key Knowledge Takeaways

A **volcano** is a landform (usually a mountain) where molten rock erupts through the surface of the planet.



An **earthquake** is a sudden violent shaking of the ground, typically causing great destruction, as a result of movements within the earth's crust or volcanic action.



A **hurricane** is a large rotating storm with high speed winds that forms over warm waters in tropical areas.



A **tsunami** is a series of waves caused by earthquakes or undersea volcanic eruptions.

Who, what and where?

Ring of Fire	The Ring of Fire is a major area in the basin of the Pacific Ocean where many earthquakes and volcanic eruptions occur.
Charles Francis Richter	Founded the Richter scale . This is a numerical scale that measures the magnitude (size) of an earthquake on a scale out of 10.
Tropic of Cancer and the Tropic of Capricorn	The Tropic of Cancer is the most northerly circle of latitude on Earth at which the sun can be directly overhead. The Tropic of Capricorn is the most southerly circle of latitude where the sun can be directly overhead.
Arctic and Antarctic Circle	The Arctic circle is an imaginary line drawn around the northern part of the world. The Antarctic circle is an imaginary line drawn around the southern part of the world.
Japan	Japan is located in The Ring of Fire therefore they suffer from many earthquakes, typhoons, tsunamis and volcanic eruptions.
New Zealand	New Zealand is located on top of two tectonic plates (Pacific and Australian plates) which causes them to have frequent earthquakes and volcanic eruptions.

Key Vocabulary

Longitude	Lines of longitude run from the top of the Earth to the bottom .
Latitude	Lines of latitude circle the Earth in an east-west direction .
Equator	The equator is an imaginary line splits the Earth into two parts; the Northern and Southern hemispheres.
Natural disaster	A natural disaster is a natural event such as a flood, earthquake, or hurricane that causes great damage or loss of life.
Grid reference	A grid reference is a map reference which indicates a location in terms of a series of vertical (up and down) and horizontal (left to right) grid lines identified by numbers.
Time Zones	Time zones give specific areas on the Earth a time of day that is earlier or later than the neighboring time zones. There are 24 time zones dividing the earth into different times.
Tectonic plates	Tectonic plates are pieces of the rocky outer layer of the Earth known as the crust. These plates are constantly moving, and volcanoes, earthquakes and sometimes mountains are found at the plate boundaries.

